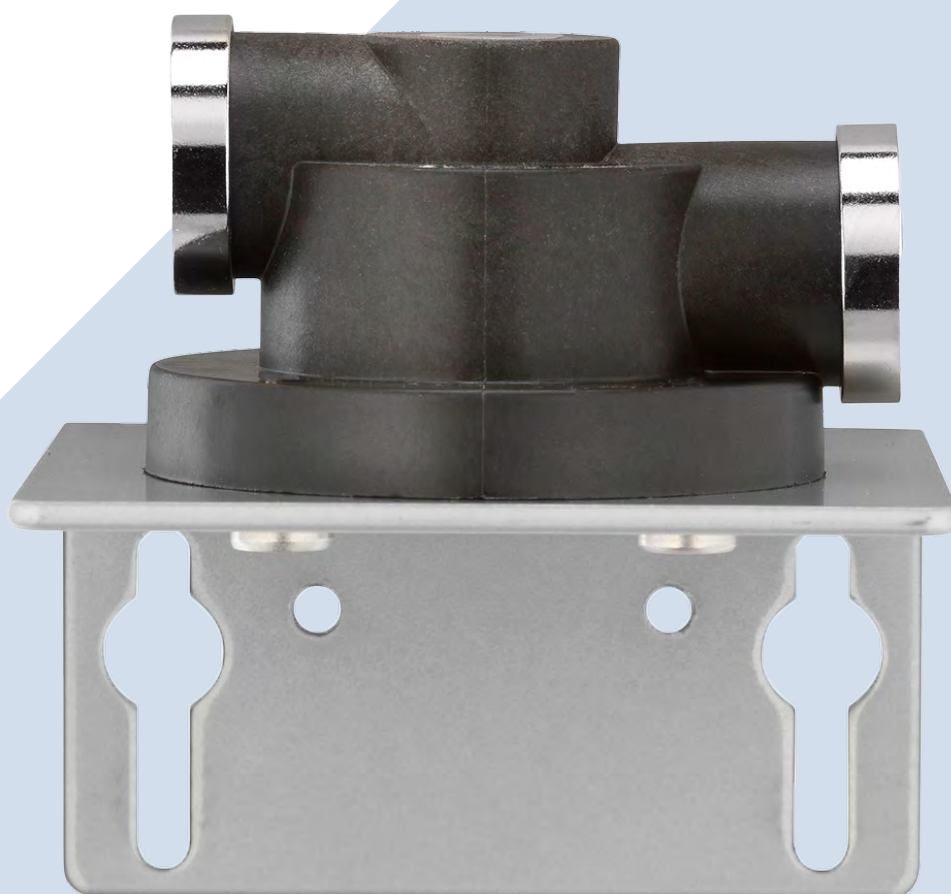


QL1 SINGLE HEAD

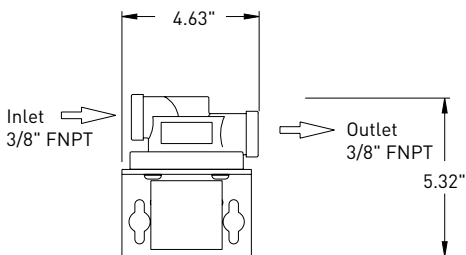
FOR USE WITH EVERPURE
REPLACEMENT CARTRIDGES



QL1 SINGLE HEAD

FOR USE WITH EVERPURE REPLACEMENT CARTRIDGES

System Part Number: EV9256-18



Features & benefits

- ▶ Commercial-grade filter head for Everpure filter cartridges
- ▶ Features mounting bracket and $\frac{3}{8}$ " NPT fittings
- ▶ Low profile is ideal for locations where mounting space is at a premium
- ▶ Engineered for durability, strength and longevity
- ▶ Corrosion resistant hardware
- ▶ Does not include water shut-off
- ▶ All wetted parts have successfully passed NSF[®] extraction tests as part of listed systems

Specifications

- ▶ **Overall dimensions** 5.32" H x 4.63" W x 4" D (13.5 cm x 11.8 cm x 10.2 cm)
- ▶ **Connections** Inlet: $\frac{3}{8}$ " FNPT John Guest[®]
Outlet: $\frac{3}{8}$ " FNPT John Guest[®]
- ▶ **Rated capacity** Varies according to filter cartridge used
- ▶ **Electrical connection** None required

INSTALLATION TIPS

- ▶ Choose mounting location suitable to support the weight of the system while operating.
- ▶ Install vertically and allow 2 1/2" (6.35 cm) clearance below the cartridge for easy cartridge replacement. Install vertically with bowl hanging down.

Flush filter by running water through the system for five (5) minutes.

- ▶ Replace cartridges annually, or when capacity is reached or flow slows down.

APPLICATIONS

- ▶ Foodservice
- ▶ Vending machines
- ▶ Office coffee services