

STRUCTURAL SUPER TANKS

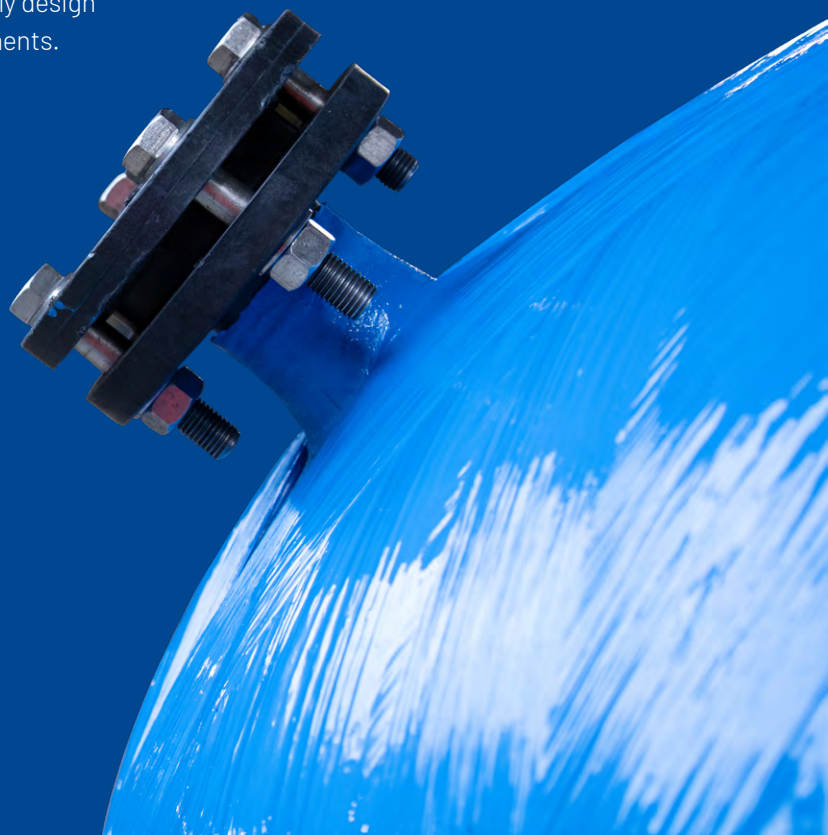
DESIGN YOUR
OWN TANK'S
SPECIFICATION

WHAT'S SO SUPER ABOUT SUPER TANKS

Structural's Supertank range has been created to enable customers to customize the specification of their tank. In today's world where every installation has got its own specific particularities, proposing the exact product with the exact specification rather than a standard solution can make the difference between winning or losing a contract.

The made-to-measure pressure tanks from Structural offer you the complete solution for industrial water treatment plants. The super quality based on composite technology sets Structural's pressure tanks in a class of their own: they are not only robust with high mechanical strength, maintenance and corrosion-free, but also light-weight, easy to handle and built to the highest industry standards.

The vast choice of configurations permits today to easily design THE SUPERTANK that perfectly matches your requirements.





OUR WEB
SITE



OPTIONAL

CUSTOM DESIGN

- Extra sight glass
- Extra dome- or side hole
- Manhole on top or at the bottom
- Built-in distribution systems
- Lifting lugs
- Different color

WIDE CHOICE OF INNER LINERS

Inner-liner can be chosen according to the needs:

- PE for standard water treatment
- Ultra-pure PE for specific applications where cleanliness is the key

STANDARD

FIBER REINFORCEMENT

- Lightweight
- Easy to handle
- No maintenance
- Standard color: RAL 5015
(other colors upon request, few options available)

SEAMLESS CLEAN VESSEL TECHNOLOGY

This is achieved by a unique liner that protects the integrity of the tank, with following advantages:

- No leakage
- No corrosion
- 100% contamination protection

RESISTANT COATING

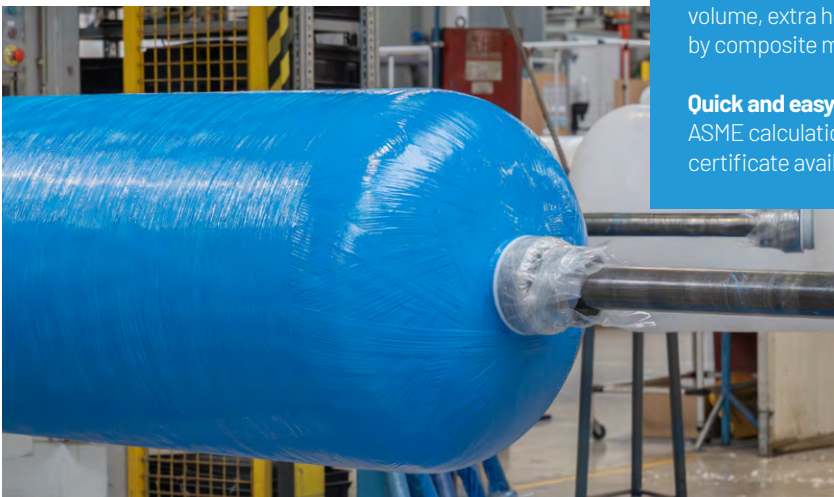
Composite technology combines the use of a plastic liner which is reinforced with glass fibers, epoxy resin and a color pigment. Due to this unique technology, the tank is protected against corrosion, and it makes it unnecessary for customers to repaint the tank during a system maintenance.

+ SPECIAL BENEFIT

Built to your needs: you want a certain height, a certain volume, extra holes,... Or you want to replace a steel tank by composite material.

Quick and easy installation

ASME calculation and hydrostatic test certificate available upon request



4 STEPS TO FOLLOW TO CUSTOMIZE YOUR SUPERTANK

STEP 1: SELECT THE SIZE AND VOLUME

Supertank Models												
Diameter	14"	16"	18"	21"	24"	30"	36"	42"	48"	55"	63"	79"
Diameter (mm)	369	406	496	552	618	770	927	1074	1226	1429	1623	2045
CL (mm)	Volume (liter)											
500	65	80	111	160	208	355	551	779	1101	1696	2269	3796
600	74	92	127	183	235	400	615	864	1212	1848	2468	4107
700	84	104	143	205	263	444	679	949	1322	2001	2666	4418
800	94	116	159	228	290	488	743	1035	1433	2153	2865	4729
900	104	128	175	250	317	532	806	1120	1544	2306	3064	5040
1000	114	140	192	272	345	576	870	1205	1655	2459	3262	5351
1100	124	152	208	295	372	620	934	1291	1766	2611	3461	5662
1200	134	164	224	317	400	665	998	1376	1877	2764	3659	5973
1300	144	176	240	340	427	709	1061	1461	1988	2917	3858	6284
1400	154	188	256	362	455	753	1125	1546	2098	3069	4056	6595
1500	164	200	273	384	482	797	1189	1632	2209	3222	4255	6906
1600	173	212	289	407	509	841	1253	1717	2320	3374	4453	7217
1700	183	224	305	429	537	886	1316	1802	2431	3527	4652	7528
1800	193	236	321	452	564	930	1380	1887	2542	3680	4851	-
1900	203	248	337	474	592	974	1444	1973	2653	3832	5049	-
2000	213	260	353	496	619	1018	1508	2058	2763	3985	5248	-
2100	223	272	370	519	647	1062	1571	2143	2874	4138	5446	-
2200	233	284	386	541	674	1106	1635	2229	2985	4290	5645	-
2300	243	295	402	564	701	1151	1699	2314	3096	4443	5843	-
2400	253	307	418	586	729	1195	1763	2399	3207	4595	6042	-
2500	263	319	434	608	756	1239	1826	2484	3318	4748	6240	-

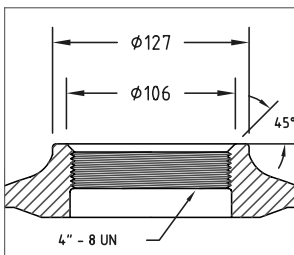
Standard tank Models (flanged tanks)												
Diameter	14"	16"	18"	21"	24"	30"	36"	42"	48"	55"	63"	79"
Diameter (mm)	369	406	496	552	618	770	927	1074	1226	1429	1623	2045
CL (mm)	1363	1331	1351	1151	1336	1295	1245	1140	1124	1106	1738	1023
Volume (L)	150	180	248	306	437	707	1026	1325	1792	2620	4727	5422

STEP 2: SELECT THE TOP AND BOTTOM OPENINGS

THREADED CONNECTIONS

Tanks are available with 4" Top only (14" – 24") or 4" Top / 4" Bottom (14" – 36") connection.

DETAIL 4" WELDED INLET

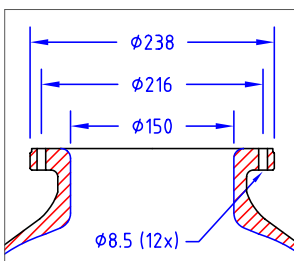


FLANGED CONNECTIONS

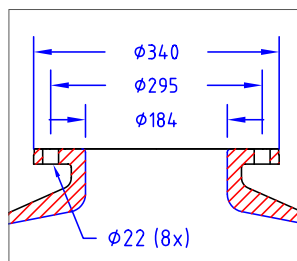
Available flanges are: 6" – DN200 – DN400 (see combinations and possible tank diameters in below table)



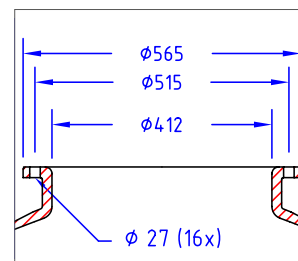
DETAIL 6" FLANGE



DETAIL DN200 FLANGE



DETAIL DN400 TOP FLANGE

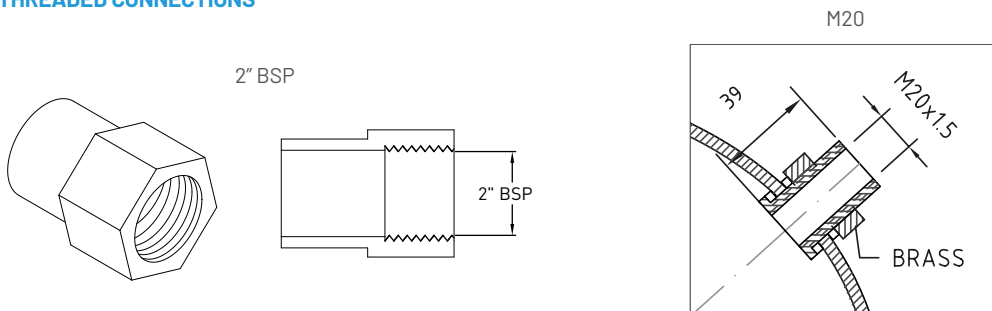


Size	Raw material		Material
	Top only	Top/bottom	
6"	14" – 48"	14" – 63"	Aluminum alloy
DN200	X	55" – 63"	Aluminum alloy
DN400	X	42" – 79"	Aluminum alloy
DN400 / 6"	X	42" – 79"	Aluminum alloy

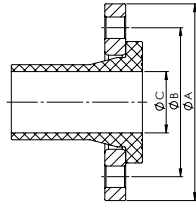
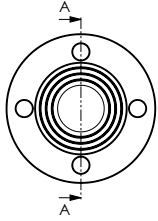
STEP 3: SELECT SIDE - AND DOME HOLES

A large choice of possible side- and dome holes is available, matching all your needs! Whether you want to easily fill and empty the tank or you want to look into the tank, just select which size fits you the best. We offer both flanged and threaded fittings and fittings can be closed with a blind flange.

THREADED CONNECTIONS

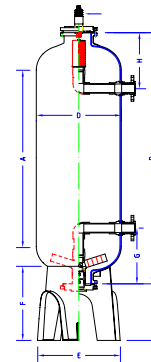
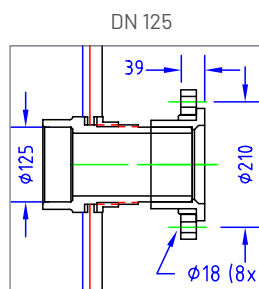
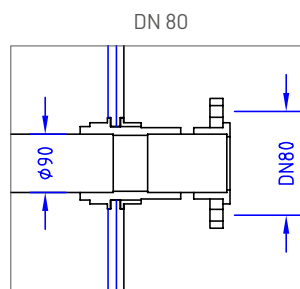
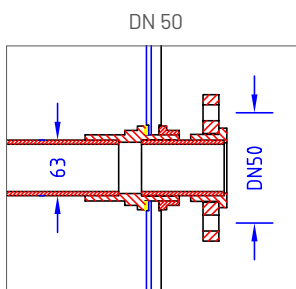


FLANGED WELDED CONNECTIONS: DN50 – DN80 – DN100 – DN150 – DN200



	A	B	C	n Holes x D	Bolts
DN50	165	125	78	4 x 18	4 x M16
DN80	202	160	108	8 x 18	8 x M16
DN100	222	180	128	8 x 18	8 x M16
DN150	286	240	178	8 x 22	8 x M20
DN200	340	295	235	8 x 22	8 x M20

FLANGED EASYCON CONNECTIONS:



BELOW TABLE BRIEFLY PRESENTS ALL AVAILABLE CONFIGURATIONS*.

Tank diam.	M20	2" BSP	DN50	DN80	DN100	63 mm	90 mm	DN150	DN200	DN125
14"	X	XZ	XZ	Z	Z	-	-	-	-	-
16"	X	XZ	XZ	Z	Z	-	-	-	-	-
18"	X	XZ	XZ	XZ	Z	-	-	-	-	-
21"	X	XYZ	XYZ	XYZ	XZ	-	-	-	-	-
24"	X	XYZ	XYZ	XYZ	XYZ	A	-	-	-	-
30"	X	XYZ	XYZ	XYZ	XYZ	A	-	Z	Z	-
36"	X	XYZ	XYZ	XYZ	XYZ	A	-	Z	Z	-
42"	X	XYZ	XYZ	XYZ	XYZ	A	B	Z	Z	-
48"	X	XYZ	XYZ	XYZ	XYZ	A	B	Z	Z	-
55"	-	XYZ	XYZ	XYZ	XYZ	A	B	Z	Z	-
63"	-	XYZ	XYZ	XYZ	XYZ	A	B	Z	Z	-
79"	-	XY	XY	XY	XY	-	-	-	-	C

LEGEND

X = TOP DOME HOLE, Y = BOTTOM DOME HOLE, Z = SIDE HOLE.

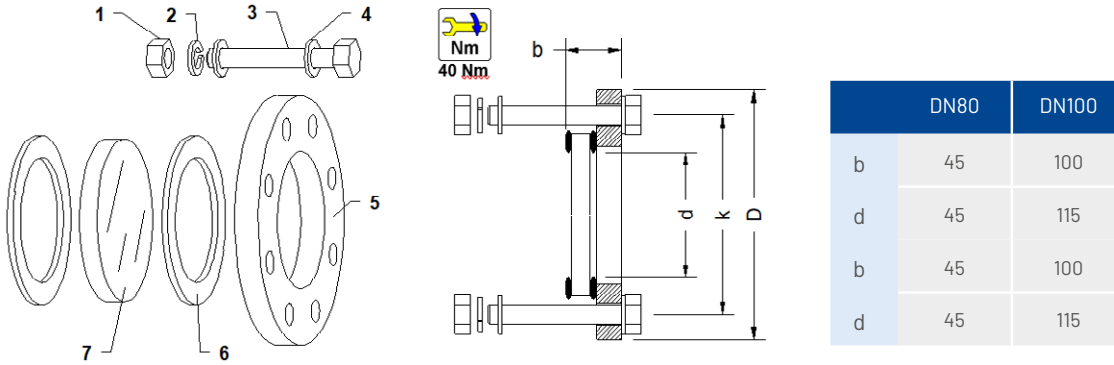
A = 63 MM / DN50 EASYCON SIDE HOLE, B = 90 MM / DN80 EASYCON SIDE HOLE, C = 125 MM / DN125 EASYCON SIDE HOLE.

(*) table is based on 6" top- and bottom tanks and can slightly differ for other tank types.

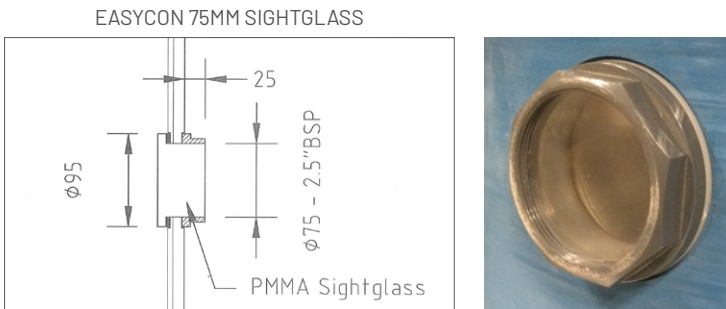
STEP 4: SELECT OTHER POSSIBLE OPTIONS

SIGHT GLASS

A sight glass is a useful option that allows checking the resin bed level or the water's turbidity and is mounted between two seals to prevent any leakage. Sight glasses are available in 2 sizes: DN80 – DN100

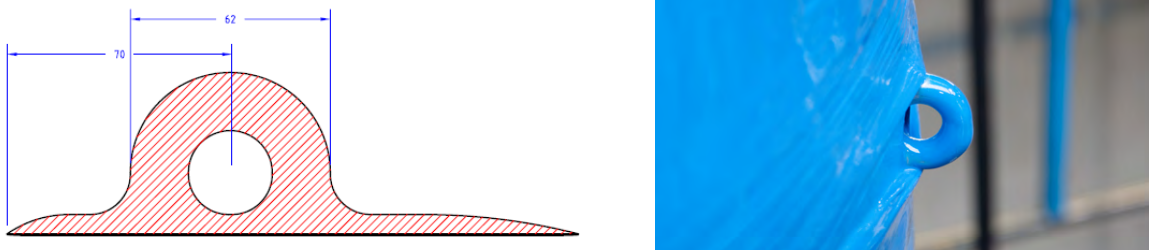


Easycon-sight glasses: Special PMMA sight glass that is assembled directly in the wall of the tank to have a much better view.



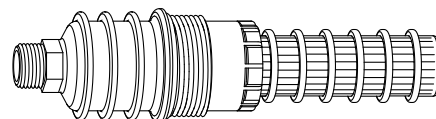
LIFTING LUGS

Such lugs permit an easier handling and positioning of the tank.



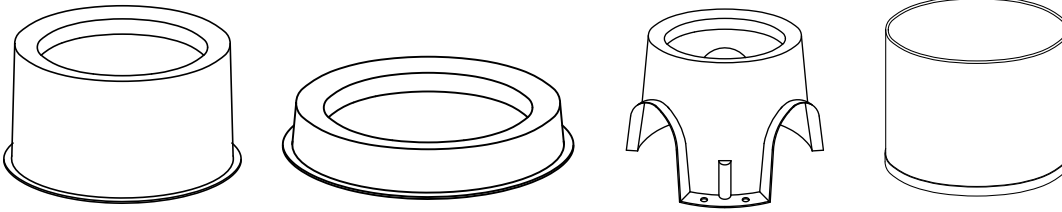
AERATION VALVE

An aeration valve is used to avoid a vacuum effect which can lead to a tank damage. It needs to be mounted somewhere in the piping on top of the tank.



BASES

We offer different types of bases, that can solve space issues or facilitate the connection at the bottom opening. We offer ringbases or tri-leg bases.



BUILT-IN DISTRIBUTION SYSTEMS

It is possible that we build-in already the top- and bottom distribution systems. This will ease your installation and start-up.

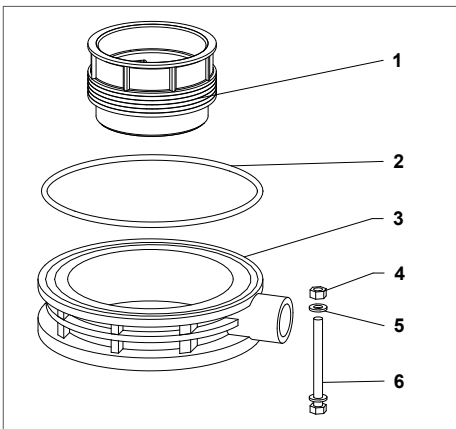


DIFFERENT COLORS

Every tank has a standard blue color (RAL5015), the color of water. In case you want to differentiate in the market, you can choose other RAL colors. We have a small list available. Non-listed colors need to be discussed upfront.

DRAIN INSERT

Instead of adding extra dome-holes to fill and empty the tank, we can also offer our 1" BSP drain insert on top and bottoms system. This is only possible on flanged tanks and the drain adapter will be assembled between tank and distribution system adapter.



SPECIFICATION FORM



REQUEST

Send the Specification Form to
WT_components@pentair.com



DRAWING

Pentair will reply within 48 hours and either confirm or propose an alternative, with price and drawing



APPROVAL

Customer reviews Pentair's drawing, signs and sends it back



CREATION

A dedicated p/n will be assigned for tracking purposes



PRODUCTION

About 30 working days are needed



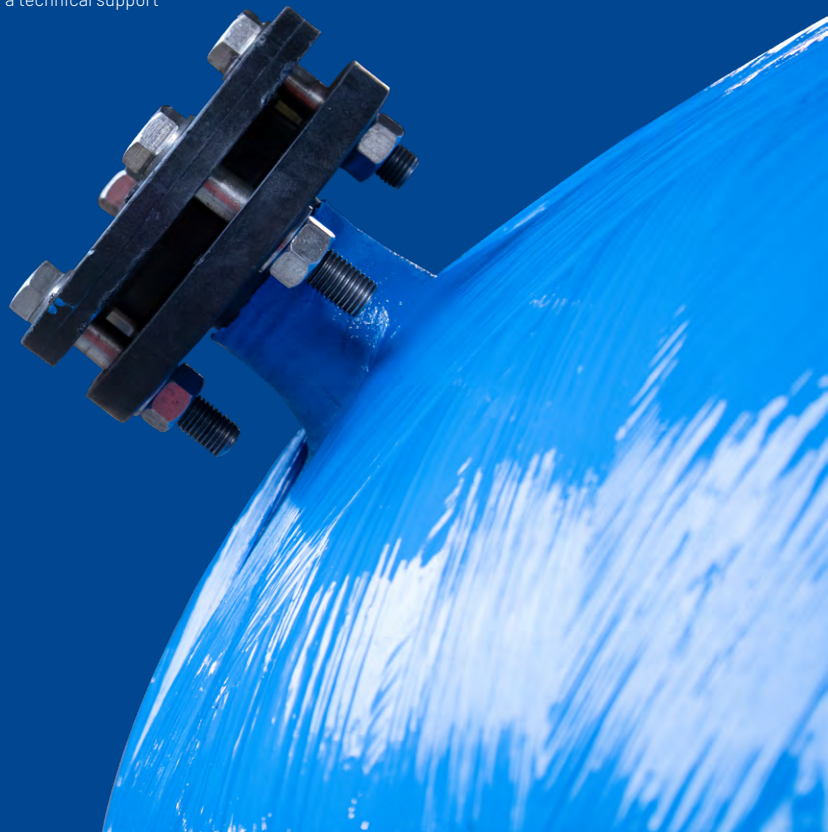
TEST

A last hydrostatic test will take place to validate the super tank's quality



READY TO BE SHIPPED

With a two year warranty and a technical support



SPECIFICATION FORM

Customer name: _____

SELECT SIZE AND VOLUME

STEP 1

Diameter tank: _____
 Liner material : PE ultra pure PE
 Cylindrical length (mm)(A): _____
 Volume (L): _____

SELECT TOP- AND BOTTOM OPENING

STEP 2

Top opening: _____
 Bottom opening: _____

SELECT SIDE- AND DOME HOLES

STEP 3

Sidehole 1: _____
 Sidehole 2: _____
 Sidehole 3: _____
 Sidehole 4: _____
 Sidehole 5: _____
 Sidehole 6: _____
 Domehole 1: _____
 Domehole 2: _____
 Domehole 3: _____
 Domehole 4: _____
 Domehole 5: _____
 Domehole 6: _____

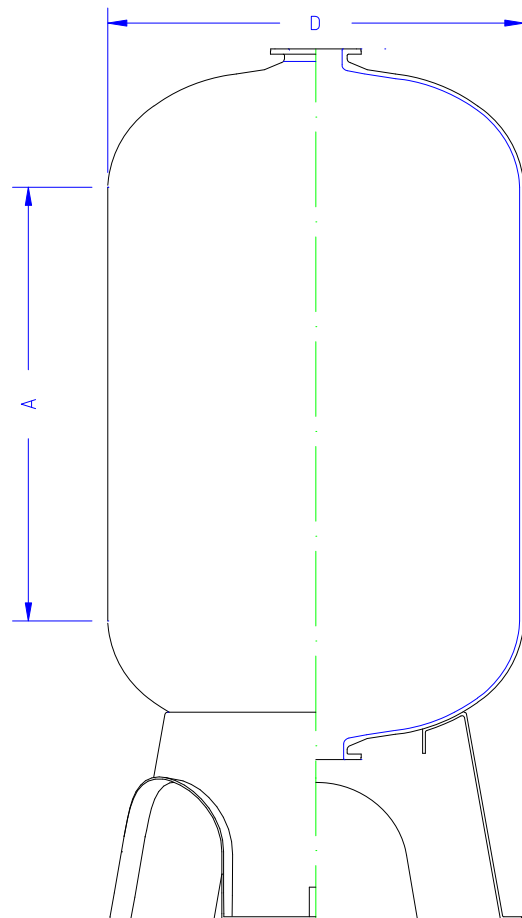
SELECT OTHER POSSIBLE OPTIONS

STEP 4

Sight glass 1: _____
 Sight glass 2: _____
 Sight glass 3: _____
 Blindflange 1: _____
 Blindflange 2: _____
 Blindflange 3: _____
 Blindflange 4: _____
 Aeration valve: Yes No (included as of 30" tank diameter)
 Lifting lugs: _____
 Base: _____
 Distribution system top: Built-in: Yes No
 Distribution system bottom: Built-in: Yes No
 Drain insert: Yes No
 Color: _____
 ASME Calculation: _____
 Hydrostatic test certificate: _____

Please send this specification form to:
WT_components@pentair.com

Company name:
 Contact name:
 Phone:
 Email:
 Date:



* Refer to the pricelist
 Our current production lead time is about 30 working days. Please note that this is only an indication, the effective lead time depends on production capacity and will be confirmed on our Order Confirmation within maximum 5 days after receipt of the signed approval drawing and your order.

www.pentair.eu