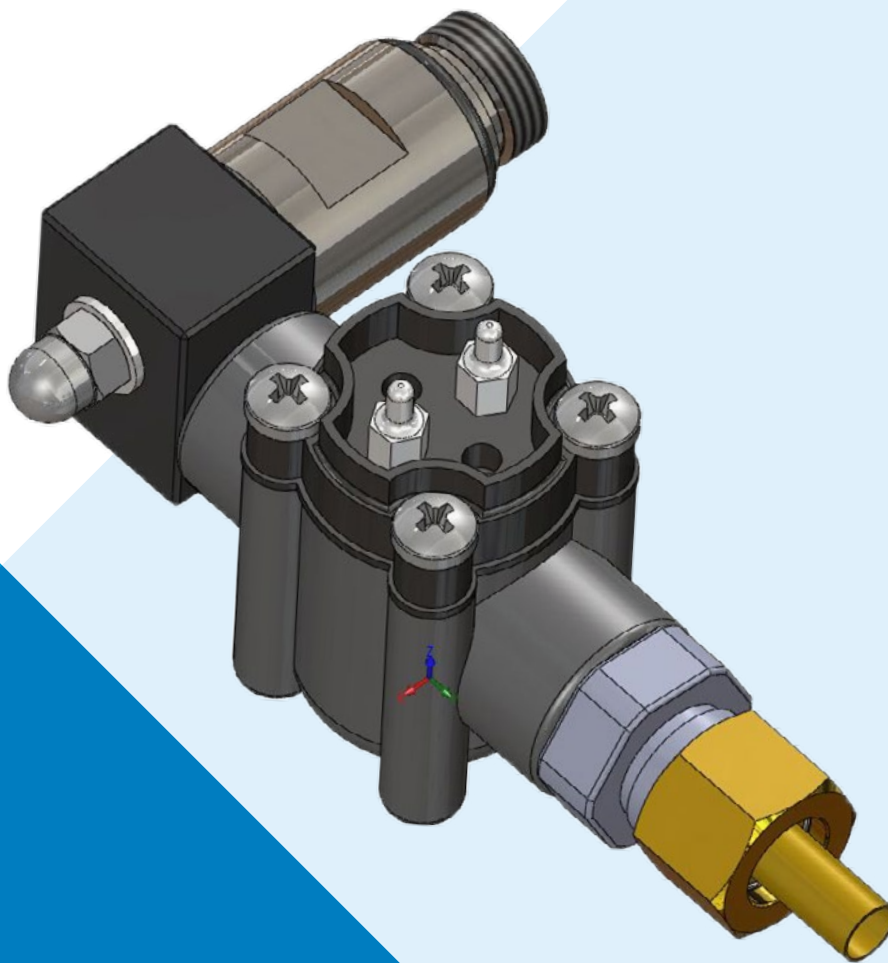


TECHNICAL SHEET

FLECK ACCESSORIES
CHLORINATOR 5800 XTR

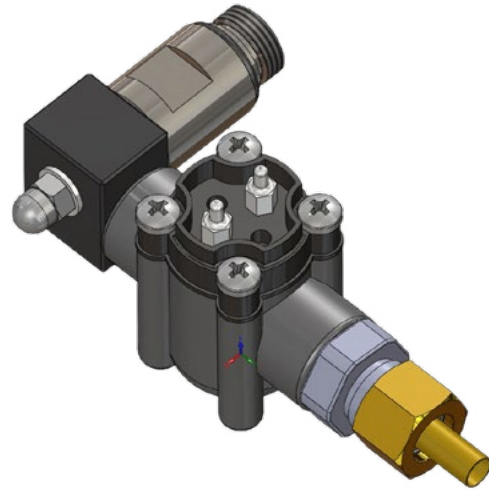




FLECK 5800 XTR CHLORINATOR

TECHNICAL CHARACTERISTICS

- For residential and commercial softening applications
 - up to 16" pressure vessels
 - time clock, meter, downflow or upflow systems
- Compatible with 5800 XTR
- Compact and robust device
 - Titanium electrodes
 - Brine elbow stainless steel adapter



WORKING PRINCIPLE

The Chlorine generator must be installed on the valve brine port using the supplied stainless steel elbow adapter. When brine is being drawn, its 2 titanium electrodes powered by 1.5 Amp from the XTR board will create an electrolysis of the brine solution (NaCl saturated solution) resulting in Hypochlorous (HClO) and Hypochlorite (NaClO) formation.

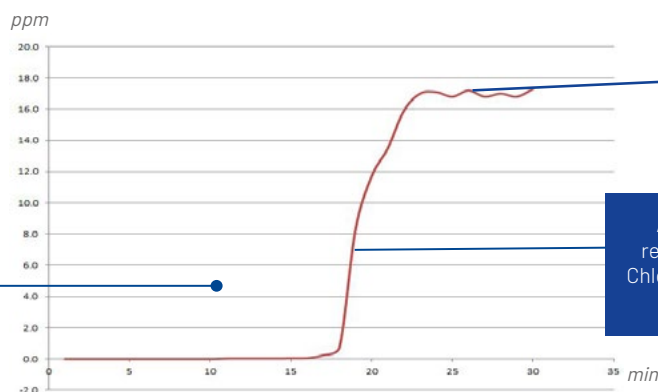
The XTR board reverts the current polarity every seconds

when powered on, therefore preventing scale and other deposits to build on the electrodes.

The concentration of free chlorine produced by the brine electrolysis will prevent bacteria growth in the resin bed, while the short contact time between chlorine and resin will not substantially affect the resin life time, especially with chlorine enhanced resistance resin.

PERFORMANCES

Chlorine production test with a 8"x18" tank empty, 5800XTR DF with Inj 1, DLFC 1.5, BLFC 0.125. Free chlorine concentration measured at drain during brine draw cycle. Test done with saturated brine.



Chlorine is being injected after injector dilution (about 50% dilution factor) and filled in a 11L tank with water that dilute the brine and chlorine.

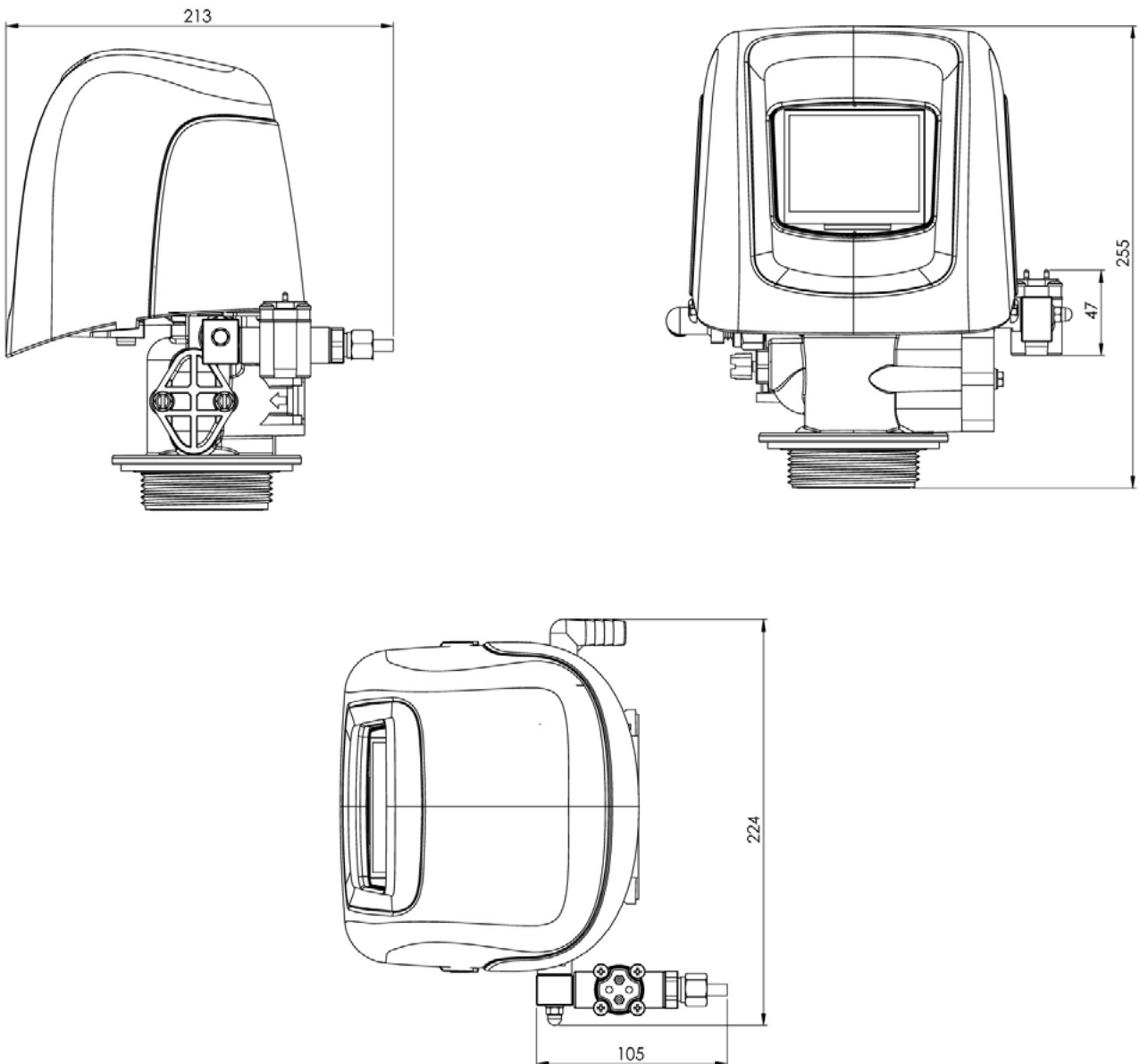
Short time free Chlorine shock to prevent bacteriological growth in the tank. When brine draw is completed and slow rinse starts, the free chlorine is rinsed to drain.

After 15 minutes, all the raw water is replaced by brine and chlorine solution. Chlorine concentration starts to raise until stabilization at about 17 ppm

The chlorine production stabilizes after ca.22 minutes with an average value of 17ppm of free CL₂.

FLECK 5800 XTR - CHLORINATOR

DIMENSIONS



www.pentairaquaeurope.com